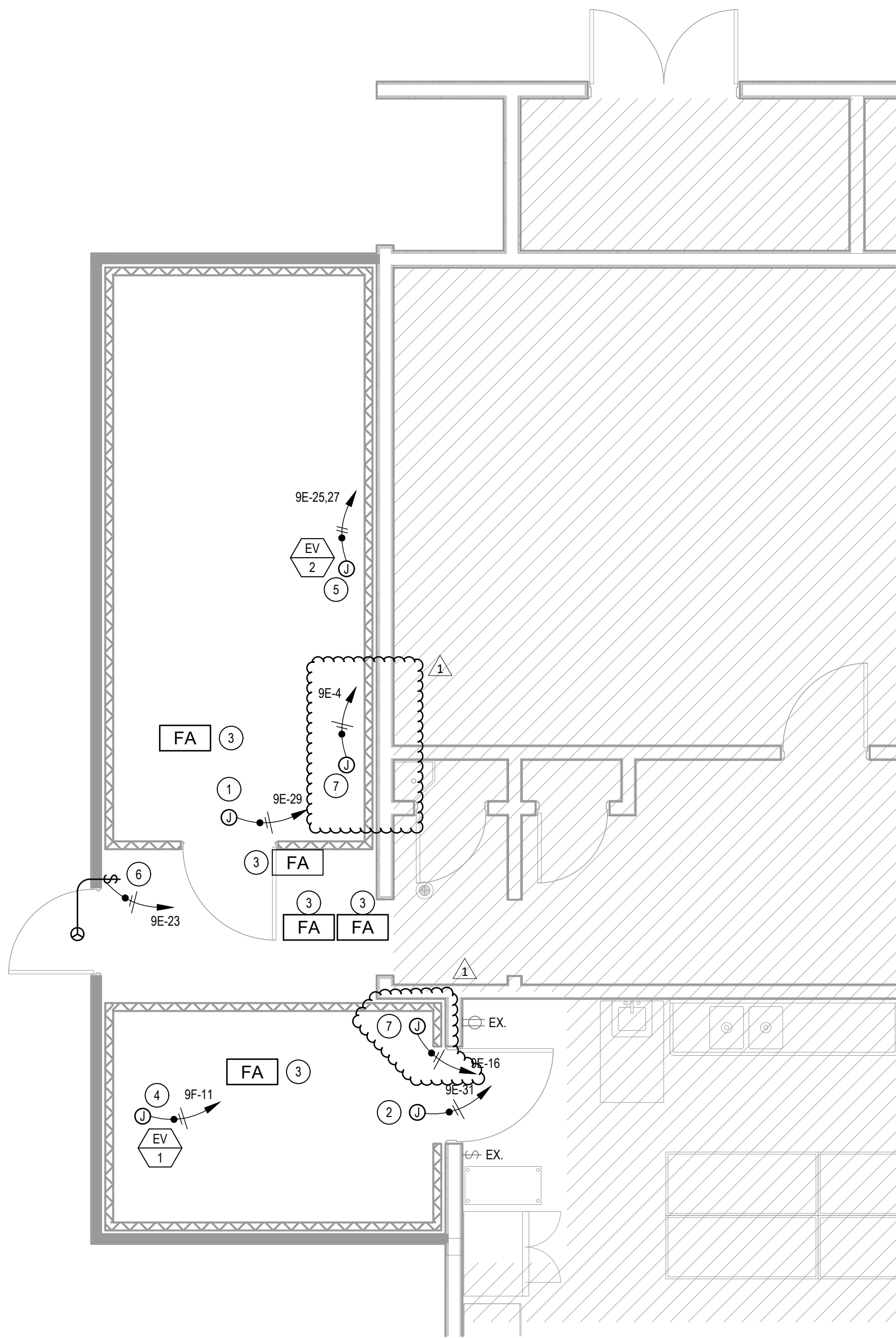


1 ENLARGED DEMOLITION PLAN
1/4" = 1'-0"



2 ENLARGED FLOOR PLAN
1/4" = 1'-0"

GENERAL NOTES

1. SEE SHEET E0.2 FOR GENERAL NOTES.

DEMOLITION KEYNOTES

- 1** CONTRACTOR SHALL TRACE AND IDENTIFY EXISTING BRANCH CIRCUIT SERVING EXISTING EXTERIOR WALL PACK LIGHT FIXTURE. DISCONNECT AND REMOVE EXISTING BRANCH CIRCUIT SERVING EXTERIOR WALL PACK LIGHT FIXTURE, PRESERVE CONTINUITY TO ANY OTHER DEVICES ON THIS BRANCH CIRCUIT. DISCONNECT AND REMOVE EXISTING EXTERIOR WALL PACK LIGHT FIXTURE. CONDUIT IN WALLS, BELOW SLAB OR ABOVE CEILINGS SHALL BE CAPPED AND ABANDONED IN PLACE.
- 2** CONTRACTOR SHALL TRACE AND IDENTIFY EXISTING BRANCH CIRCUIT SERVING EXISTING LIGHT FIXTURE. DISCONNECT AND REMOVE EXISTING BRANCH CIRCUIT SERVING LIGHT FIXTURE, PRESERVE CONTINUITY TO ANY OTHER DEVICES ON THIS BRANCH CIRCUIT. DISCONNECT AND REMOVE EXISTING LIGHT FIXTURE TO BE SALVAGED AND REINSTALLED. CONDUIT IN WALLS, BELOW SLAB OR ABOVE CEILINGS SHALL BE CAPPED AND ABANDONED IN PLACE.
- 3** DISCONNECT AND REMOVE EXISTING FIRE ALARM DEVICE, PRESERVE CONTINUITY TO ANY OTHER DEVICES. DISCONNECT AND REMOVE EXISTING FIRE ALARM DEVICE TO BE SALVAGED AND REINSTALLED. CONDUIT IN WALLS, BELOW SLAB OR ABOVE CEILINGS SHALL BE CAPPED AND ABANDONED IN PLACE.
- 4** CONTRACTOR SHALL TRACE AND IDENTIFY EXISTING BRANCH CIRCUIT SERVING EXISTING LIGHTING. DISCONNECT AND REMOVE EXISTING BRANCH CIRCUIT SERVING LIGHTING, PRESERVE CONTINUITY TO ANY OTHER DEVICES ON THIS BRANCH CIRCUIT. DISCONNECT AND REMOVE EXISTING LIGHTING. CONDUIT IN WALLS, BELOW SLAB OR ABOVE CEILINGS SHALL BE CAPPED AND ABANDONED IN PLACE.
- 5** CONTRACTOR SHALL TRACE AND IDENTIFY EXISTING BRANCH CIRCUIT SERVING EXISTING TOGGLE SWITCH. DISCONNECT AND REMOVE EXISTING BRANCH CIRCUIT SERVING TOGGLE SWITCH, PRESERVE CONTINUITY TO ANY OTHER DEVICES ON THIS BRANCH CIRCUIT. DISCONNECT AND REMOVE EXISTING TOGGLE SWITCH TO BE SALVAGED AND REINSTALLED. CONDUIT IN WALLS, BELOW SLAB OR ABOVE CEILINGS SHALL BE CAPPED AND ABANDONED IN PLACE.
- 6** EXISTING ELECTRICAL DEVICE AND BRANCH CIRCUIT SHALL BE PROTECTED IN PLACE DURING CONSTRUCTION.
- 7** CONTRACTOR SHALL TRACE AND IDENTIFY EXISTING BRANCH CIRCUIT SERVING EXISTING FREEZER/COOLER EQUIPMENT. DISCONNECT AND REMOVE ELECTRICAL CONNECTION TO EXISTING FREEZER/COOLER EQUIPMENT. REMOVE WIRING BACK TO SOURCE PANEL, UNLESS NOTED OTHERWISE. LABEL ANY EXISTING VACATED CIRCUIT BREAKERS AS SPARE AND UPDATE OWNER'S AS-BUILT RECORD DRAWINGS. REMOVE EXPOSED, SURFACE MOUNTED CONDUIT. CONDUIT IN WALLS, BELOW SLAB OR IN CEILINGS MAY BE CAPPED AND ABANDONED IN PLACE.
- 8** CONTRACTOR SHALL TRACE AND IDENTIFY EXISTING BRANCH CIRCUIT SERVING EXISTING AIR CURTAIN. DISCONNECT AND REMOVE ELECTRICAL CONNECTION TO EXISTING AIR CURTAIN. REMOVE WIRING BACK TO SOURCE PANEL, UNLESS NOTED OTHERWISE. LABEL ANY EXISTING VACATED CIRCUIT BREAKERS AS SPARE AND UPDATE OWNER'S AS-BUILT RECORD DRAWINGS. REMOVE EXPOSED, SURFACE MOUNTED CONDUIT. CONDUIT IN WALLS, BELOW SLAB OR IN CEILINGS MAY BE CAPPED AND ABANDONED IN PLACE.

KEYNOTES

- 1** PROVIDE AND INSTALL JUNCTION BOX FOR POWER CONNECTION TO AUXILIARY POWER FOR NEW FREEZER. COORDINATE UNIT FEED LOCATION WITH MANUFACTURER SHOP DRAWINGS.
- 2** PROVIDE AND INSTALL JUNCTION BOX FOR POWER CONNECTION TO AUXILIARY POWER FOR NEW COOLER. COORDINATE UNIT FEED LOCATION WITH MANUFACTURER SHOP DRAWINGS.
- 3** INTERCEPT AND EXTEND EXISTING CONDUITS AND CONDUCTORS AS NEEDED FOR CONNECTION TO SALVAGED FIRE ALARM DEVICE TO BE REINSTALLED. CONTRACTOR SHALL FIELD VERIFY EXISTING CONDITIONS PRIOR TO ROUGH-IN.
- 4** PROVIDE AND INSTALL JUNCTION BOX FOR POWER CONNECTION TO EVAPORATOR FOR NEW COOLER. COORDINATE UNIT FEED LOCATION WITH MANUFACTURER SHOP DRAWINGS.
- 5** PROVIDE AND INSTALL JUNCTION BOX FOR POWER CONNECTION TO EVAPORATOR FOR NEW FREEZER. COORDINATE UNIT FEED LOCATION WITH MANUFACTURER SHOP DRAWINGS.
- 6** INTERCEPT AND EXTEND EXISTING CONDUITS AND CONDUCTORS AS NEEDED FOR POWER CONNECTION TO SALVAGED AIR CURTAIN DEVICE TO BE REINSTALLED. CONTRACTOR SHALL FIELD VERIFY EXISTING CONDITIONS PRIOR TO ROUGH-IN.
- 7** PROVIDE AND INSTALL JUNCTION BOX FOR POWER CONNECTION TO HEAT TAPE FOR NEW COOLER/FREEZER. COORDINATE UNIT FEED LOCATION WITH MANUFACTURER SHOP DRAWINGS.

ENLARGED PLANS

SAN DIEGO UNIFIED SCHOOL DISTRICT
KITCHEN MODIFICATIONS GROUP 6
BELL MIDDLE SCHOOL
620 BRIARWOOD RD,
SAN DIEGO, CA 92139
DSA SUBMITTAL SET

PREPARED FOR THE
BOARD OF EDUCATION

PREPARED BY THE
obr/ARCHITECTURE
2419 EL CAJON BLVD, SAN DIEGO, CA 92104

PROJECT NO. SDUF-002
R.S. A.P.

FILE NAME

DATE 04/09/25

REVISIONS
1 04/23/25

SHEET NO.

E4.0

COFFMAN ENGINEERS
1455 Frazee Rd., Suite 600
San Diego, CA 92108
ph 619.232.4673
www.coffman.com

FOR DSA REVIEW ONLY -
NOT FOR CONSTRUCTION



obr
ARCHITECTURE, INC.
ARCHITECT/CONSULTANT

